



**MINYU MACHINERY CORP., LTD.**

***PRODUCT CATALOG***



[www.minyu.com](http://www.minyu.com)

## INTRODUCTION

**Address :** No. 7-2, San-Hu Li, Yangmei City 32669, Taoyuan, Taiwan

**Date of Incorporation :** January 11, 1966

**Capital :** NT\$362 Million (US\$ 11 Million)

**President :** Ming-Yih Cheng

**Products:** Mining Machinery

## HISTORY

- 1965** Founding of Minyu Machinery Corporation in Taiwan.
- 1966** Acquisition of the company's first business license, issued by the Ministry of Economy on January 11, which is the official anniversary of Minyu.
- 1970** First export of mining machines into many Asian countries, first distributor in South East Asia a few years later.
- 1973** Factory relocated to Yangmei in Taoyuan County.
- 1984** First export of mining machines to the United States, appointment of first distributor in the United States.
- 1989** First export of mining machines to Europe, first distributor in Europe.
- 1995** First export of mining machines to Australia, appointment of distributor for Australia and New Zealand.
- 1995** First export of mining machines to Japan.
- 1999** First distributor for North East Asia.
- 1999** ISO 9002 and Taiwan Excellence Award granted.
- 2000** ISO 9001:2000 accredited.
- 2002** First export of mining machines to India, first distributor in South Asia.
- 2004** First export of mining machines to Africa, appointment of distributor in Algeria.
- 2004** First export of mining machines to South America, appointment of distributors in Colombia and Ecuador one year later.
- 2005** First export of mining machines to Mainland China, appointment of distributor in China.
- 2007** First export of mining machines into the Middle East region.
- 2008** First export of mining machines to Russia.
- 2009** Minyu Machinery Corp.,Ltd. ISO9001:2008 accredited
- 2010** Minyu Crushers acquire European CE certification





THE WORLD'S BEST IS MADE IN TAIWAN



ISO 9001:2000



CE-CERTIFICATE

QUALITY

SERVICE

FRIENDSHIP



Planning • Designing • Manufacturing • Installing





# Cone Crusher

SP SERIES



MINYU

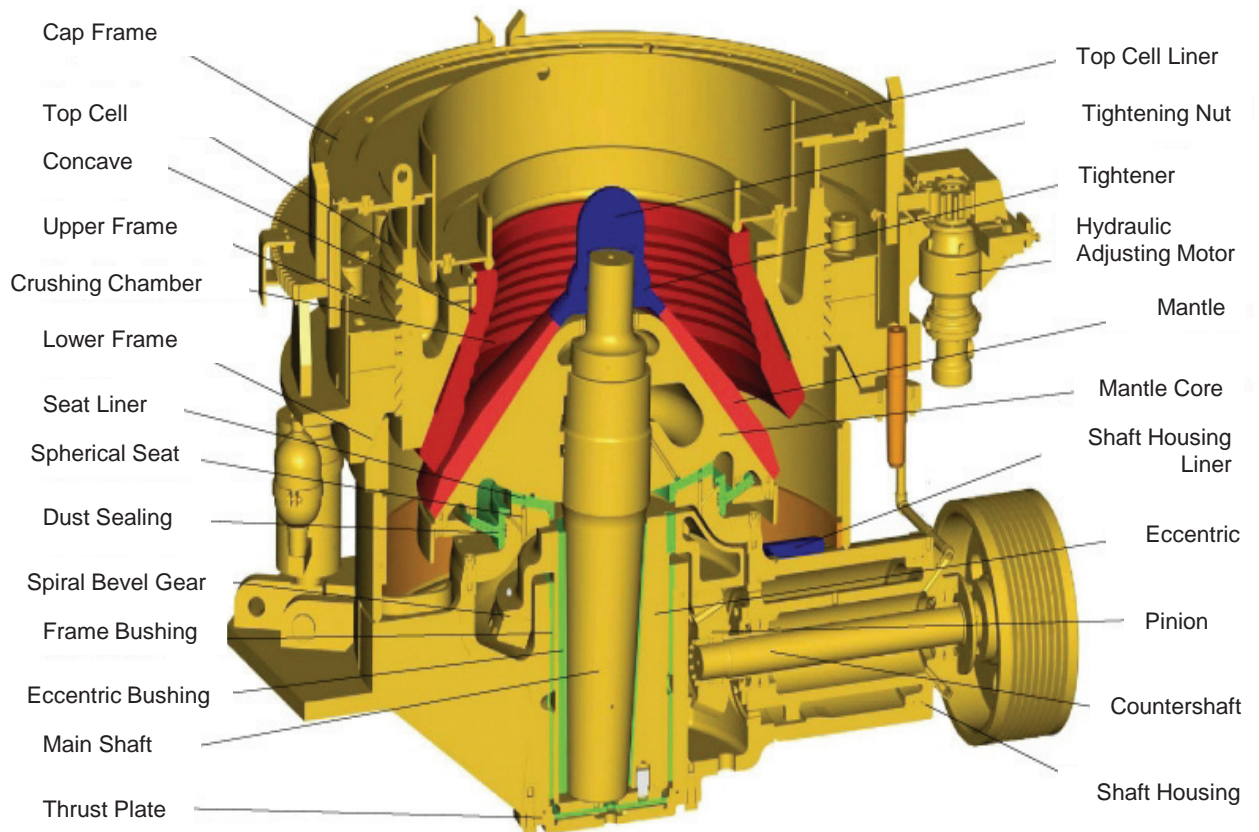
# FEATURES



## MINYU SP SUPERCONE SERIES CONE CRUSHER

1. Higher rotation speed and higher eccentric height for bigger crushing ratio.
2. The mantle and concave for coarse, medium and fine crushing can be installed in the same top cell assembly, to increase flexibility and convenience of the operation.
3. Higher rotation speed up to 800 RPM to obtain more capacity.
4. Increased height of concave for more crushing efficiency.
5. Automatic over-load protection---Upon overload, the discharge gap setting can be restored automatically to keep steady production quality.
6. Equipped with most advanced hydraulic control system for simple operation and less manpower.
7. Strong & tidy main frame including crusher sheave with high power transmission rate for longer service life of the drive device.

## STRUCTURE OF A MINYU SP SERIES CONE CRUSHER





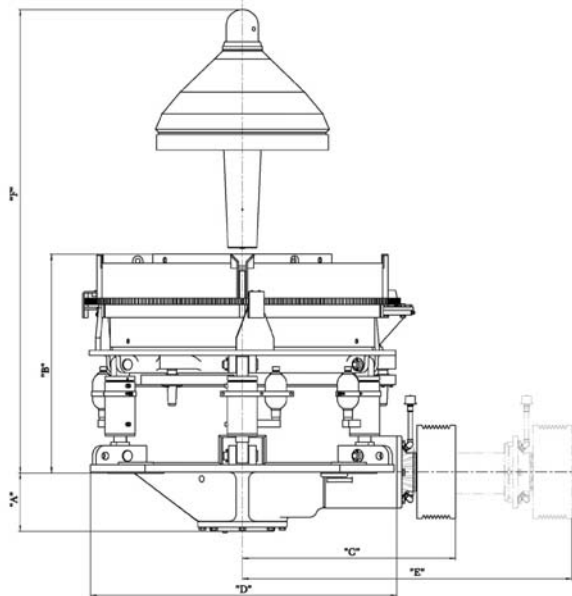


Cone Crusher MSC400, 400 TPH, at a quarry in Central Taiwan

# SPECIFICATIONS



## APPROXIMATE GENERAL DIMENSIONS



Section (mm) Model No.	"A"	"B"	"C"	"D"	"E"	"F"
MSC200	423	1445	1255	1808	2075	2945
MSC300	403	1583	1471	2126	2409	3252
MSC400	477	1770	1717	2505	2780	3727

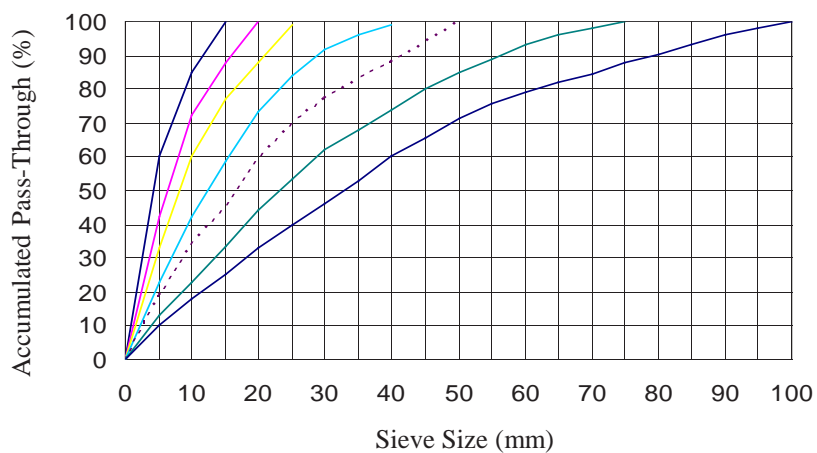
All parameters are for reference only & subject to change without notice.



SP Series Cone Crusher at a quarry in Northern Taiwan



## GENERAL GRADATION CURVES



All parameters are for reference only & subject to change without notice.

Model No.	Max. Feed Size [mm]	Min. Discharge Opening [mm]	Motor Rating [Kw]	Throughput Tons/Hour [TPH]						Weight (Kg)
				Closed Side Discharge Opening [mm]						
				19	22	25	38	45	51	
MSC200	185	19	110-150	165~185	180~210	200~240	265~310			12000
MSF200	145	17	110-150	145~165	160~195	185~220	230~280			12000
MSC300	210	22	180-225		210~240	230~280	290~350	320~380	360~430	18700
MSF300	185	19	180-225	190~220	205~230	225~260	270~330			18700
MSC400	290	25	220-300			295~355	370~480	430~500	470~550	28400
MSF400	210	22	220-300		265~310	290~330	350~410	390~440		28400

\* Capacity/Throughput based on continuous regulated feed of clean, dry limestone of normal hardness with a bulk density of 1.6 ton/m<sup>3</sup>. Capacity may vary +/- 25% with the size and nature of the rock and the working conditions of the plant.



## : 95HI F 9G



### EASY-TO-OPERATE CONTROLLER

When equipped with the manual button-controlled Electric Panel Controller configuration option, the Minyu SP Series Cone Crusher has the following great design features:

- Manual/Hand mode: when the main control button is switched to the HAND Mode position, auto-locking for crushing chamber is disabled, and the operator may proceed to perform gap setting adjustment, crushing chamber clearing, etc. An LED display is provided when pressing the ADJUST button to go up or down to make setting change, or the CLEAR button up & down for chamber clearing. The RED light is turned ON when it's engaged.
- Auto mode: when the main control button is switched to the AUTO position, the controller system ensures the auto-locking hydraulic cylinders be set to automatically provide pressure compensation, and then it shuts off the hydraulic oil to the cylinders if & when the pressure has reached a standard level. During the crusher's operation, the green light is turned ON.

**NOTE: Adjustment of the gap setting and clearing function is DISABLED in the AUTO mode.**

When equipped with the touch-controlled Electric Panel Controller configuration option, the Minyu SP Series Cone Crusher has the following great design features:

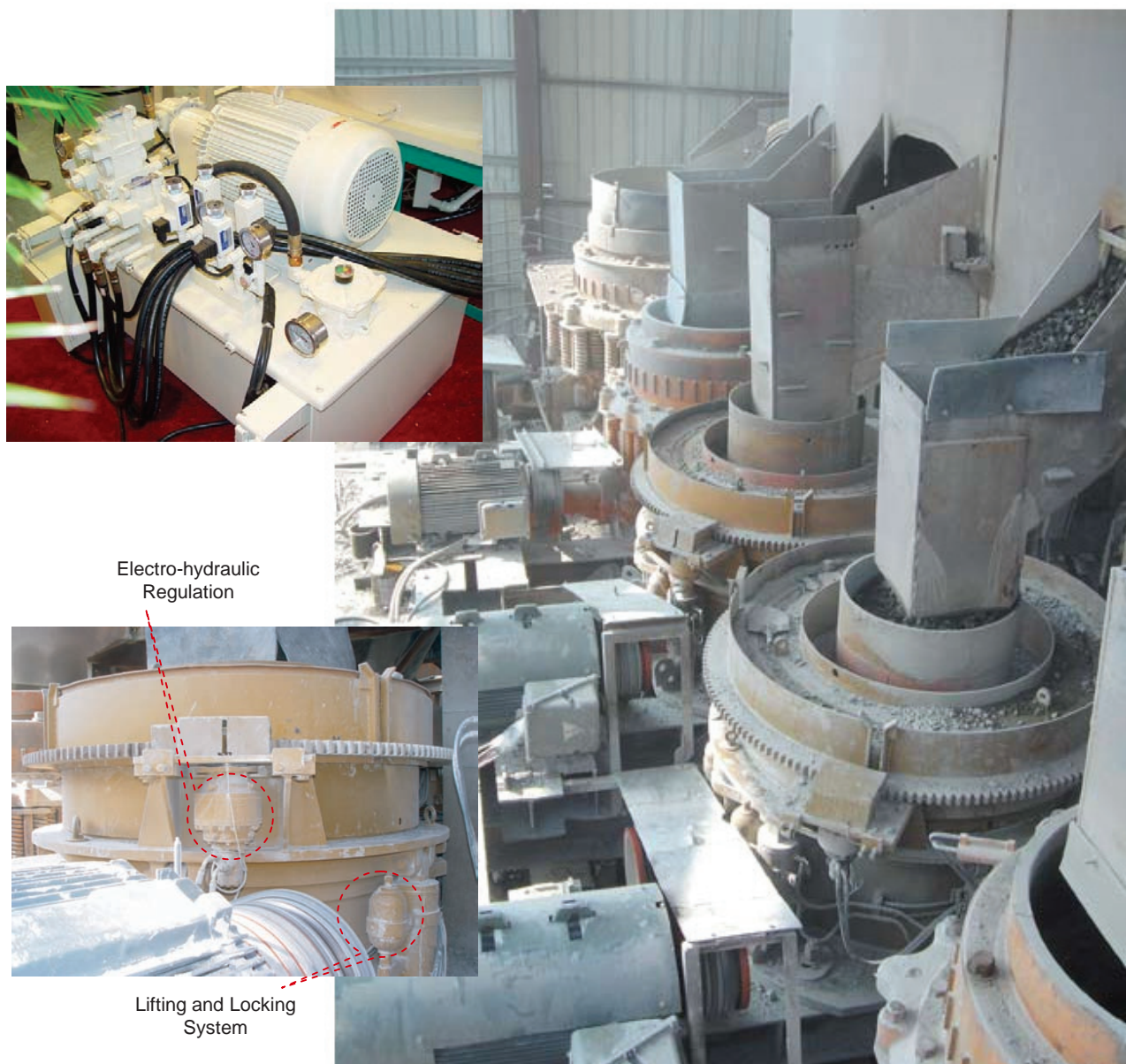
- Run Mode: controls essential factors for machine running, such as: automatic engagement of the lubrication system, min. pressure control of lubricant, upper frame lock, lower frame lock, automatic pressure compensation.
- Adjust Mode: adjusting the discharge gap by hand, or automatically by setting a fixed value. Can be equipped with wireless remote control to adjust the discharge gap and clear the crushing chamber when standing next to the crusher.



Cone Crusher MSC300 at the BAUMA CHINA 2006 in Shanghai.

## ELECTRIC HYDRAULIC AUTO-ADJUSTING, SETTING LOCKING AND LIFTING SYSTEM

With the MINYU Electric Auto Adjusting, Setting Locking & Lifting System, the cone crusher setting adjustment is very simple & straightforward. Turning the Top Cell by rotating the hydraulic planetary gear boxes easily adjusts the discharge gap. Changeovers of discharge openings are fast, downtime is minimized, and the production requirements are accurately met. For immediate and easier removal of unwanted foreign materials inside the crushing chamber in case of a power failure, the hydraulic lifting system is also provided. There is also a locking safety device to ensure the offset, keeping the system level should the clamping pressure fall.

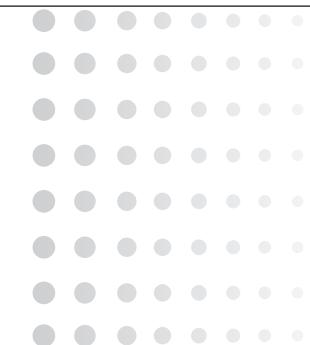


Stationary Plant at 350TPH Throughput with MSC400 and MSF400 in Central Taiwan.



Many factors including but not limited to the feeding method, the material characteristics, the speed, the power applied, the hardness or compressive strength, and the mineral and moisture content of the material, may & will affect production capacities and gradations. Minyu Machinery Corp., Ltd. does not guarantee production or gradation results presented in this literature. All technical info, data and results should be used for reference only as they will vary with different field applications or operating conditions. All technical data and specifications details are subject to change without notice, in course of continuous improvement purposes.





*Quality . Service . Friendship*



**MINYU MACHINERY CORP., LTD.**

MINYU :

Address : 7-2 , San Hu Li , Yangmei 32669 , Taoyuan , Taiwan.

TEL : +886-3-478-1168 FAX : +886-3-475-9741 <http://www.minyu.com> E-mail : [office@minyu.com](mailto:office@minyu.com)

Trading Division : William & Christine Corporation

Address : 5F-8.No. 16. Sec. 1 Nanking E .Rd Taipei 104 Taiwan.

TEL : +886-2-2581-2252 FAX : +886-2-2581-9452 E-mail : [jonathan@minyu.com](mailto:jonathan@minyu.com)