

## TAILORED PURCHASING SOLUTIONS

- SERVICE EXCHANGE -**  
 Large inventory of OEM compatible service exchange components to keep your operations running
- OUTRIGHT PURCHASE -**  
 Direct purchase of ready-to-ship components
- REPAIR & RETURN -**  
 Our expert mechanics repair and remanufacture components to OEM specs in our state-of-the-art facilities
- PARTS INVENTORY -**  
 Our inventory search tool gives you access to an extensive inventory of parts and components to find what you need, when you need it
- AFTERMARKET PARTS -**  
 We also offer a range of aftermarket products

## WHY HEPI?



### CUSTOMER-CENTRIC EXCELLENCE:

We're committed to understanding and exceeding your unique needs



### INNOVATIVE PRECISION AND UNMATCHED QUALITY:

Every part meets the highest standards, ensuring long-lasting performance that meets or beats OEM specifications



### OPTIMIZED TOTAL COST OF OWNERSHIP:

Our solutions help you maximize uptime and minimize costs over the life of your equipment



789 REAR WHEEL GROUP



CAT 24 C-27



830E FRONT SUSPENSION

## PERTH, WA

MINING SOLUTIONS			
HEPI ITEM #	OEM	DESCRIPTION	QTY
A22450	2719315	24M REAR AXLE ASSY REPAIR	1
A10300	EB1717	830E FRONT WHEEL GROUP	1
A10475	58E-50-00500	830E FRONT SUSPENSION ASSY	3
A11100	XB0823	930E-2-4 FRONT WHEEL GROUP	1
A12990	EM8846	930E-4/LATE-3 REAR STRUT ASSY	2
A14505	3117786	785 HOIST CYLINDER ASSY REPAIR	3
A6855	3008549	785 FRONT SUSPENSION	1
A7000	3099597	785 FRONT WHEEL GROUP	2
A9991		789 CONTROL ROD ASSY REPAIR	1
A6808	5T4476	789 REAR WHEEL GROUP	7
A7001	3288492	789 FRONT WHEEL GROUP	3
A7500	3345492	793A-D STD REAR WHEEL GROUP	3
A13697	2885664	789D DIFFERENTIAL ASSEMBLY	2
A11350	3345493	793 EL REAR WHEEL GROUP	4
A33400	4667422	793 DIFFERENTIAL AUTONOMOUS READY	2
A8000	2802056	793 STANDARD FRONT WHEEL GROUP	1
A8000-AT	3377940	793 FRONT WHEEL GROUP AUTONOMOUS READY	5
A8050	2955710	793 REAR SUSPENSION ASSEMBLY	1
A8100	2955707	793 FRONT SUSPENSION ASSEMBLY	1

MINING SOLUTIONS   ENGINES			
HEPI PART #	OEM	DESCRIPTION	QTY
A13999	1189628	D11R/T SCAB ASSY	2
A14650	6Y5645	789C TRANSMISSION ASSY	1
A14846	2792520	793F TRANSMISSION ASSY	1
A14847	2792521	793F TORQUE CONVERTER	1
A15700	2267614	D10T TORQUE CONVERTER	1
A17900	1210030	D11R TORQUE CONVERTER	1
A19720	3510988	789D TRANSMISSION ASSY	1
A20750	3156272	777G TRANSMISSION ASSEMBLY	1
A25835	3726094	D10T2 TRANSMISSION & BEVEL GEAR ASSY	1
A25836	3596482	D10T2 TORQUE CONVERTER ASSY	1

# MACKAY, QLD

## MINING SOLUTIONS

HEPI ITEM #	OEM	DESCRIPTION	QTY
A31375	3083244	773G DIFFERENTIAL ASSEMBLY; REPAIR	1
A6162	N/A	776/777 FRONT STRUT	2
A10600	3077342	777F REAR WHEEL GROUP	2
A9576	3356354	777 REAR SUSPENSION REPAIR	1
A20950	3083213	777G FRONT WHEEL GROUP (WET DISC)	1
A5000	3178378	785 REAR WHEEL GROUP	1
A7307	4568724	785 REAR SUSPENSION ASSEMBLY	4
A7350	3477426	789 FRONT SUSPENSION ASSEMBLY	2
A6808	5T4476	789 REAR WHEEL GROUP	1
A12950	4663323	793 DIFFERENTIALS	1
A11000	2161716	793D/F EL FRONT WHEEL GROUP	2
A11350	3345493	793 EL REAR WHEEL GROUP	1
A8050	2955710	793 REAR SUSPENSION ASSEMBLY	2
A13995	2824029	D10T FINAL DRIVE	2
A8200	3435375	D11 FINAL DRIVE TEST CHANGE	2
A13885	2719321	24H/M WHEEL & BRAKE GROUP	1
A11025	EM8355	930E HOIST CYLINDER ASSEMBLY	10
A11650	EM0241	930E STEERING CYLINDER ASSY	5
A12990	EM8846	930E-4/LATE-3 REAR STRUT ASSY	6
A12050	N/A	830E/930E SWAY BAR ASSY	1

## MINING SOLUTIONS | ENGINES

HEPI PART #	OEM	DESCRIPTION – SERIAL RANGE	QTY
A32300	454-2330	777G TORQUE CONVERTER – TNM	1
A34500	563-2134	793F C175-16 ENGINE – SSP	1
A16420	359-6502	D10T2 C27 ENGINE – RAB	1
A16410	271-2219	D10T C27 ENGINE – RJG	1
A32323	463-7472	CAT 24 C27 ENGINE – E9Z	1
A19720	351-0988	789D TRANSMISSION – SPD	2
A17130	117-3357	785C TORQUE CONVERTER – APX	1
A17120	116-5811	789C TORQUE CONVERTER – 2BW	1
A16700	299-0726	789D TORQUE CONVERTER – SPD	1
A13990	237-1017	D10T STEERING CLUTCH/BRAKE – RJG	2
A27780	161-7430	789C TRANSMISSION PUMP – 2BW	2
A17050	3T-0260	785C TRANSMISSION PUMP – APX	1
A31699	374-9554	D10T2 TRANSMISSION PUMP – RAB	1
A20110	201-8389	D10T TRANSMISSION PUMP – RJG	1

A14124	295-1072	D11T TRANSMISSION PUMP – GEB/AMA	3
A17060	6T-6148	785 T/C SCAVENGE/BRAKE RELEASE PUMP – APX	1
A17170	165-4500	789C T/C SCAVENGE/BRAKE RELEASE PUMP – 2BW	1
A16800	311-3539	785 FAN DRIVE – SERIAL RANGE APX	3

## COOLING SOLUTIONS

HEPI PART #	OEM	DESCRIPTION	QTY
HE0047834-H	1255044	773E RADIATOR	2
HE0058200-H	7W4074	777C RADATOR CAT 777	2
HE0177248-H	2955171	777G RADIATOR	3
HE0153163-H	2529246	777G RADIATOR WITH CAC'S	4
HE0133557-H	1630809	785C RADIATOR	2
HE0176863-H1	3098457	785D RADIATOR WITH CAC'S	5
HE0133282-H	1451226	789C RADIATOR	9
HE0177266-H	3716127	789D RADIATOR	2
HE0132094-H	1638098	793C ATY RADATOR	2
HE0164506-H	1936287	793D NEXT GEN RADIATOR	2
C30382	N/A	793F RADIATOR MODULE	9
C31600	3208196	793F OIL COOLER REAR AXLE	3
HE0176636-H	5869872	793F MESABI RADIATOR	4
HE0177243-H	2513588	773F RADIATOR WITH CAC'S	2
HE0177389-H	2966740	D10T MESABI RADIATOR	1
HE0131627-H1	N/A	D10T RJ MESABI RADIATOR MODULE	4
HE0177392-H	3878408	D10T2 MESABI RADIATOR	5
C30877	N/A	D10T2 RAB RADIATOR MODULE	2
C30147	N/A	D11R MESABI RADIATOR	2
C32672	N/A	D11T AMA RADIATOR MODULE	9
C33061	3123464	D11T AMA TRANS COOLER	7
HE0176896-H	3579977	D11T AMA MESABI RADIATOR	7
HE0177177-H	5016720	D11 KSN MESABI RADIATOR	4
HE0177391-H	3200458	D11T GEB MESABI RADIATOR	3
C30340	113726	RH340 MESABI RADIATOR	2

# SOUTH AUSTRALIA

## COOLING SOLUTIONS

HEPI PART #	OEM	DESCRIPTION	QTY
HE0177248-H	2955171	777G RADIATOR	1
C30274	561-03-84108	KOMATSU HD785-7 RADIATOR	1

# NEW SOUTH WALES

## MINING SOLUTIONS

HEPI PART #	OEM	DESCRIPTION	QTY
A10300	EB1717	<b>830E</b> FRONT WHEEL GROUP	<b>3</b>
A10330	EH9423	<b>830E</b> REAR STRUT ASSY-MID TYPE	<b>1</b>
A10360	2435552	<b>777D-F</b> FRONT WHEEL GROUP (DRY DISC)	<b>1</b>
A10475	58E-5U- 08F00-	<b>830E</b> FRONT SUSPENSION ASSY	<b>5</b>
A10550	58F-3U- 00104	<b>930E-2-4</b> FRONT SUSPENSION	<b>3</b>
A11100	XB0823	<b>930E-2-4</b> FRONT WHEEL GROUP	<b>2</b>
A12990	EM8846	<b>930E-4/LATE-3</b> REAR STRUT ASSY	<b>3</b>
A13500	EM8840	<b>830E</b> REAR STRUT ASSY-LATE TYPE	<b>1</b>
A13865	2860682	<b>16M</b> WHEEL & SERVICE BRAKE GP	<b>2</b>
A13885	2719321	<b>24H/M</b> WHEEL & BRAKE GROUP	<b>1</b>
A23800		<b>HD785-7</b> FRONT CORNER ASSY	<b>2</b>
A5000	3178378	<b>785</b> REAR WHEEL GROUP	<b>4</b>
A6808	5T4476	<b>789</b> REAR WHEEL GROUP	<b>3</b>
A7001	3288492	<b>789</b> FRONT WHEEL GROUP	<b>3</b>
A7350	3477426	<b>789</b> FRONT SUSPENSION ASSEMBLY	<b>2</b>
A7380		<b>789</b> FRONT BRAKE ASSEMBLY	<b>1</b>
A7500	3345492	<b>793A-D</b> STD REAR WHEEL GROUP	<b>2</b>
A8511	1256046	<b>789C</b> DIFFERENTIAL	<b>2</b>

## COOLING SOLUTIONS

HEPI PART #	OEM	DESCRIPTION	QTY
HE0058200-H	7W4074	<b>777C</b> RADIATOR	<b>1</b>
HE0153163-H	252-9246	<b>777F</b> RADIATOR; EXCLUDES CHARGE AIR COOLERS	<b>1</b>
HE0133557-H	163-0809	<b>784C &amp; 785C</b> – RADIATOR; SERIAL RANGE 2PZ/AP>	<b>1</b>
HE0133282-H	145-1226	<b>789C</b> RADIATOR; SERVICE EXCHANGE RADIATOR	<b>1</b>
HE0177266-H	371-6127	<b>789D</b> RADIATOR; ** HIGH DISPLACEMENT ENGINE**	<b>1</b>
HE0164506-H	193-6287	<b>793D</b> RADIATOR; NEXT GEN REPAIR **NOT FOR MESABI STYLE**	<b>1</b>
C30340	113726	<b>O&amp;K RH340 MESABI</b> RADIATOR	<b>2</b>

**CLICK BELOW TO CONTACT US TODAY!**

CONTACT  
SALES

VISIT OUR  
WEBSITE

FOLLOW US  
ON LINKEDIN



**793F RADIATORS**



**793 TRANSMISSION**



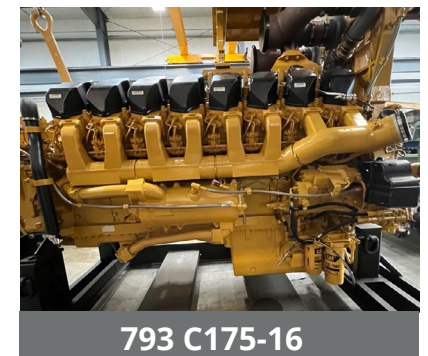
**D10T C27**



**16M BRAKE GROUP**



**930E FRONT WHEEL GROUP**



**793 C175-16**



**D10T2 RAB RADIATOR**



**793D FINAL DRIVE**